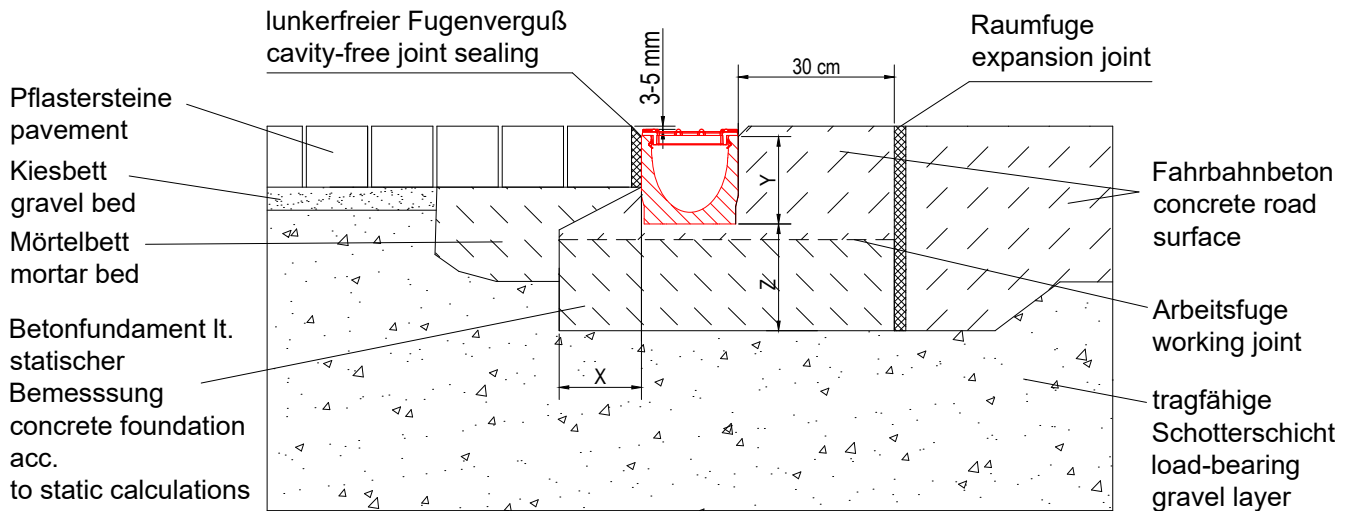
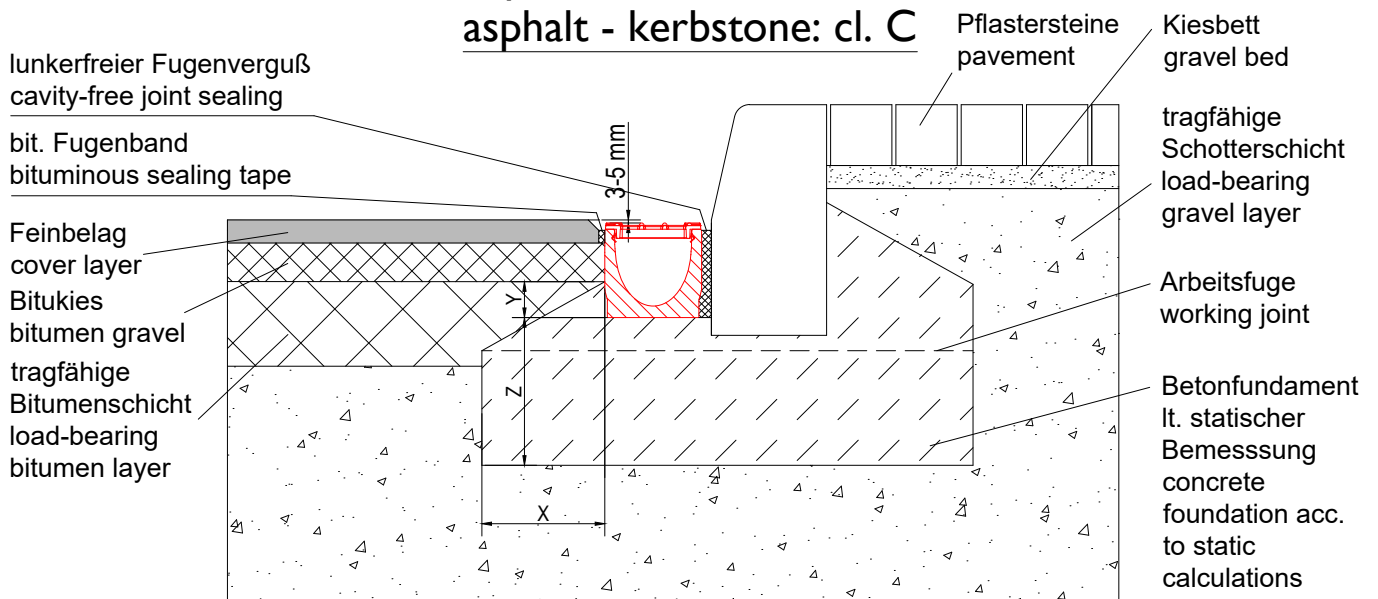


Pflaster - Beton: Kl. A - C pavement - concrete: cl. A - C

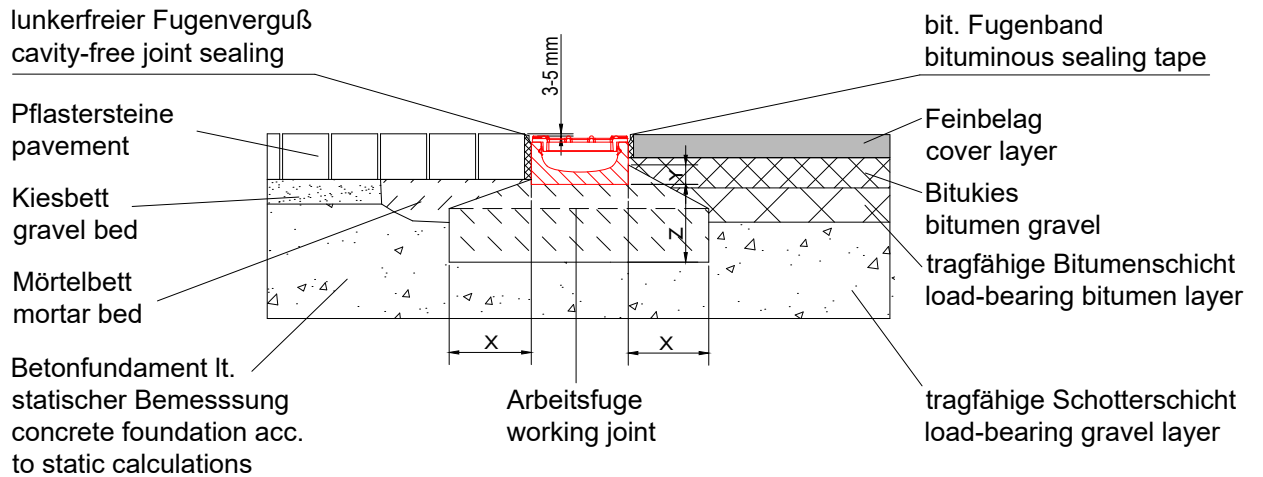


Asphalt - Bordstein: Kl. C asphalt - kerbstone: cl. C

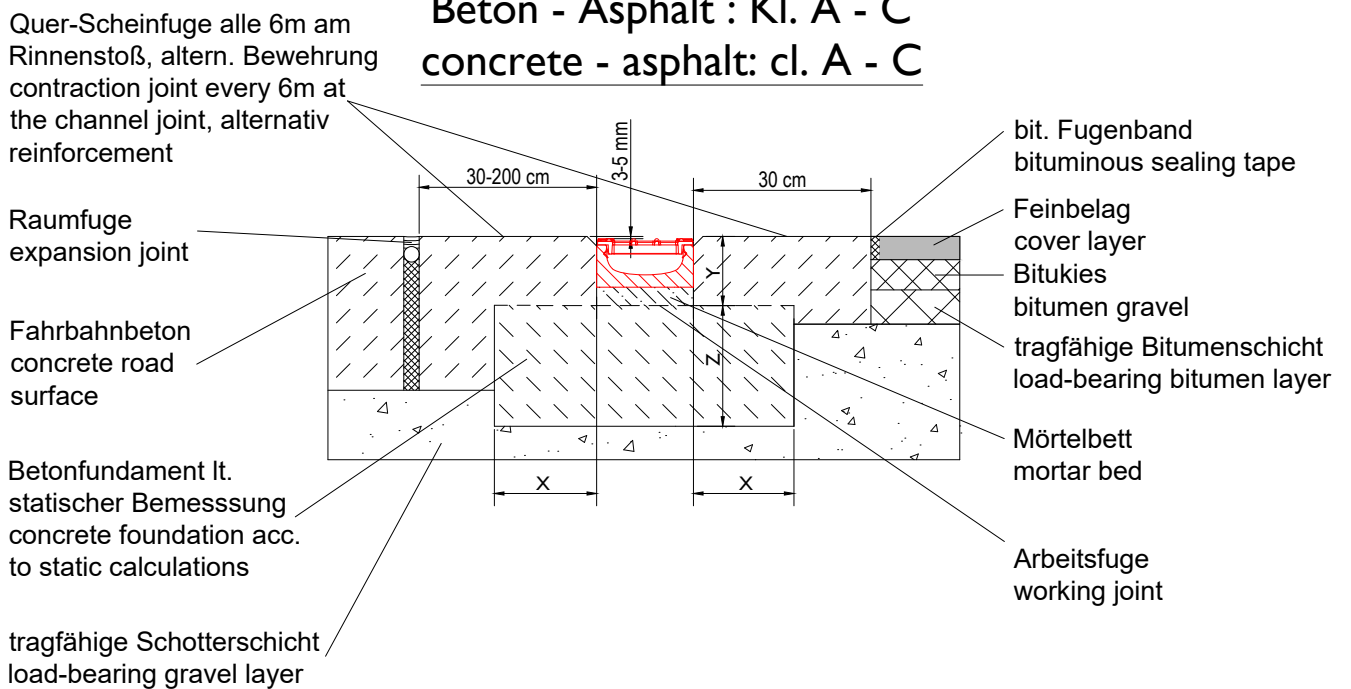


Belastungsklasse/load class	A 15 kN	B 125 kN	C 250 kN
Betongüte - Fundament gem. / concrete quality acc. to Ö-Norm B4710-1*	C 16/20	C 20/25	C 20/25
Breite: / width: X	≥ 8 cm	≥ 10 cm	≥ 15 cm
Höhe: / height: Y	Rinnenhöhe / channel height - 5 cm (mini - 3 cm)		
Stärke / thickness: Z	≥ 8 cm	≥ 10 cm	≥ 15 cm
Steckeisen / reinforcement bar	nicht erforderlich / unnecessary		
* Betongüte ist eine Mindestanforderung und den örtlichen Anforderungen anzupassen. * Concrete quality is a minimum requirement and has to be adapted to the local conditions.			

Pflaster - Asphalt: Kl. A - C pavement - asphalt: cl. A - C

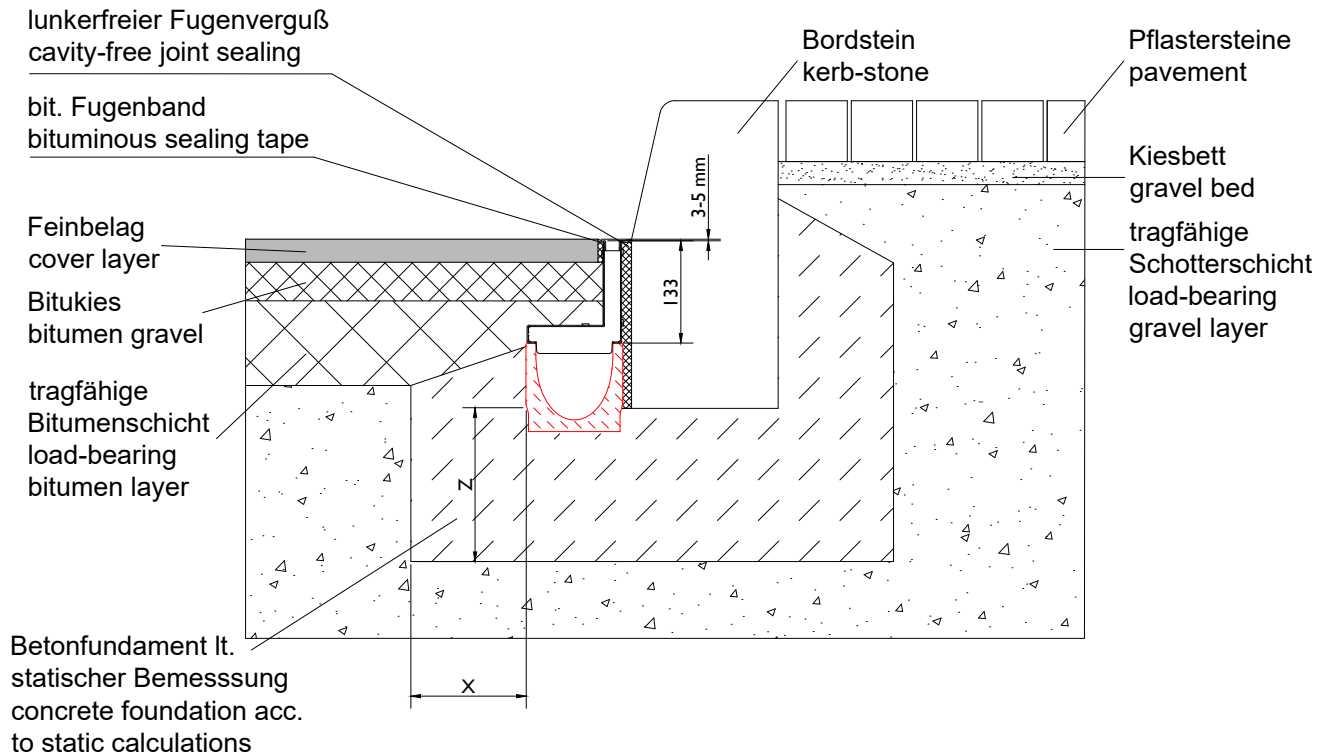


Beton - Asphalt : Kl. A - C concrete - asphalt: cl. A - C



Belastungsklasse/load class	A 15 kN	B 125 kN	C 250 kN
Betongüte - Fundament gem. / concrete quality acc. to Ö-Norm B4710-1*	C 16/20	C 20/25	C 20/25
Breite: / width: X	≥ 8 cm	≥ 10 cm	≥ 15 cm
Höhe: / height: Y	Rinnenhöhe / channel height - 5 cm (mini - 3 cm)		
Stärke / thickness: Z	≥ 8 cm	≥ 10 cm	≥ 15 cm
Steckeisen / reinforcement bar	nicht erforderlich / unnecessary		
* Betongüte ist eine Mindestanforderung und den örtlichen Anforderungen anzupassen. * Concrete quality is a minimum requirement and has to be adapted to the local conditions.			

Asphalt - Bordstein: Kl. C asphalt - kerbstone: cl. C



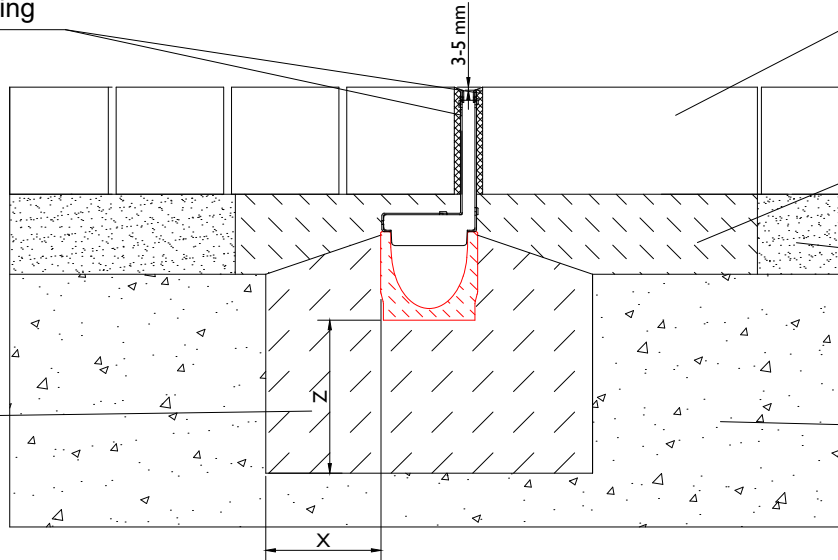
Belastungsklasse/load class	A 15 kN	B 125 kN	C 250 kN
Betongüte - Fundament gem. / concrete quality acc. to Ö-Norm B4710-1*	C 16/20	C 20/25	C 20/25
Breite: / width: X	≥ 8 cm	≥ 10 cm	≥ 15 cm
Höhe: / height: Y	Rinnenhöhe / channel height - 5 cm (mini - 3 cm)		
Stärke / thickness: Z	≥ 8 cm	≥ 10 cm	≥ 15 cm
Steckeisen / reinforcement bar	nicht erforderlich / unnecessary		
* Betongüte ist eine Mindestanforderung und den örtlichen Anforderungen anzupassen. * Concrete quality is a minimum requirement and has to be adapted to the local conditions.			

Pflasterbelag: Kl. D
pavement: cl. D

lunkerfreier Fugenverguß
cavity-free joint sealing

Pflastersteine
pavement

Betonfundament lt.
stat. Bemessung
concrete
foundation acc.
to static calc.



Bebetonbett
concrete bedding

Kiesbett
gravel bed

tragfähige
Schottererschicht
load-bearing
gravel layer

Pflasterbelag: Kl. D
pavement: cl. D

lunkerfreier Fugenverguß
cavity-free joint sealing

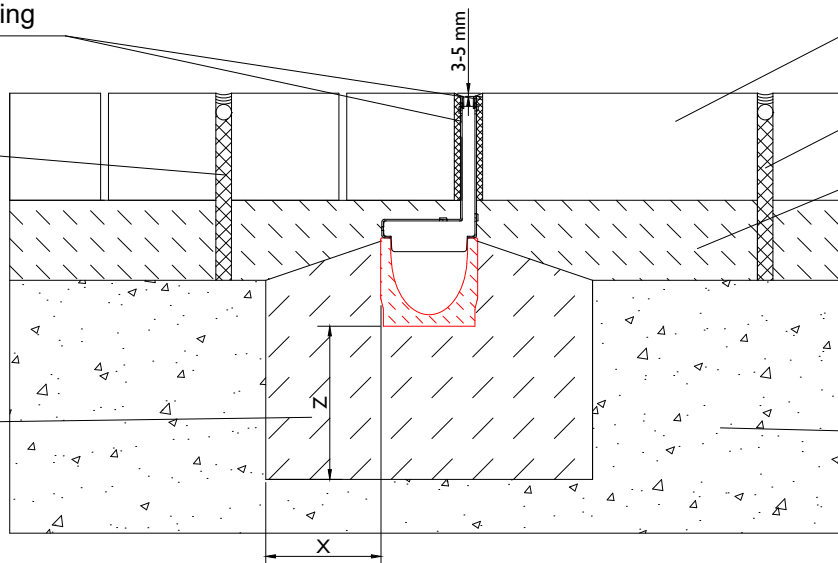
Pflastersteine
pavement

Raumfuge
dilatation joint

Raumfuge
dilatation joint

Bebetonbett
concrete bedding

Betonfundament lt.
stat. Bemessung
concrete
foundation acc.
to static calc.



tragfähige
Schottererschicht
load-bearing
gravel layer

Belastungsklasse/load class	D 400 kN
Betongüte - Fundament gem. / concrete quality acc. to Ö-Norm B4710-1*	C 25/30
Breite: / width: X	≥ 15 cm
Höhe: / height: Y	Rinnenhöhe / channel height
Stärke / thickness: Z	≥ 20 cm
Steckeisen / reinforcement bar	nicht erforderlich / unnecessary
* Betongüte ist eine Mindestanforderung und den örtlichen Anforderungen anzupassen. * Concrete quality is a minimum requirement and has to be adapted to the local conditions.	