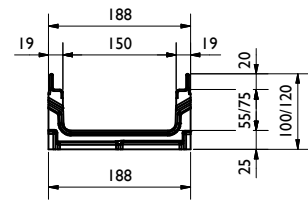
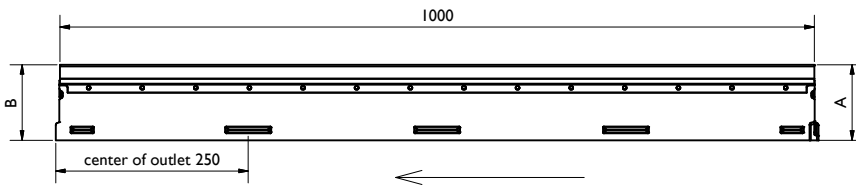
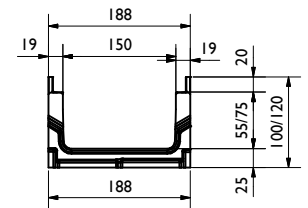
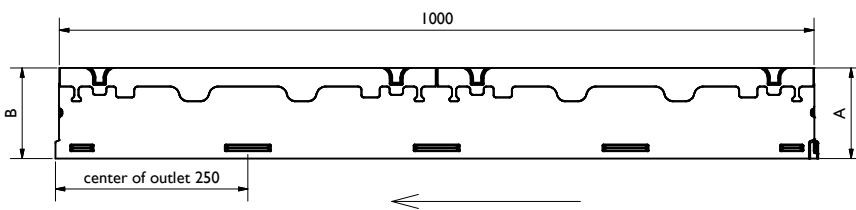


Rinnen/Channel:

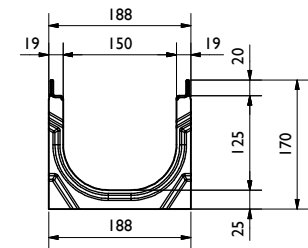
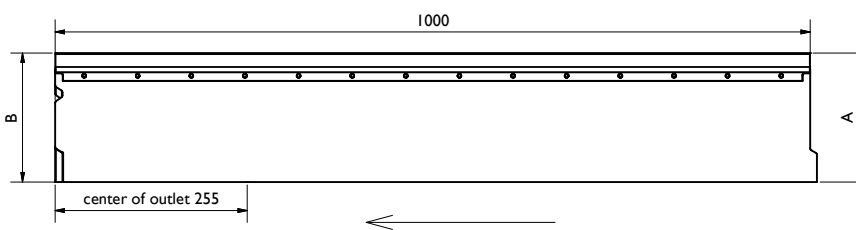
FCT pro NW150 mini 100/120 V-E
BG code: siehe Tabelle/ see table:



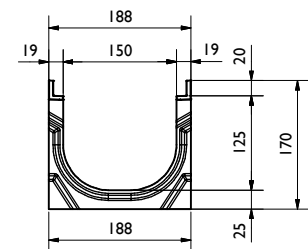
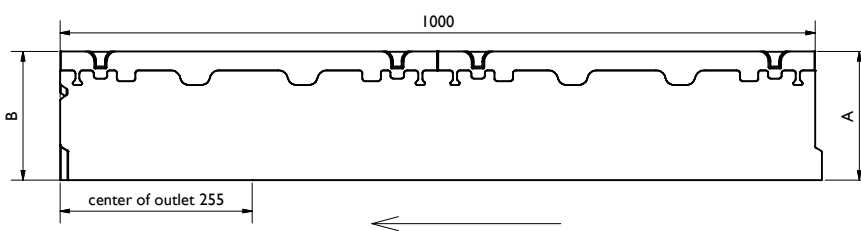
FCT pro NW150 mini 100/120 G
BG code: siehe Tabelle/ see table:



FCT pro NW150 mini 170 V-E
BG code: siehe Tabelle/ see table:



FCT pro NW150 mini 170 G
BG code: siehe Tabelle/ see table:

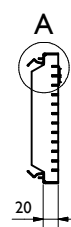
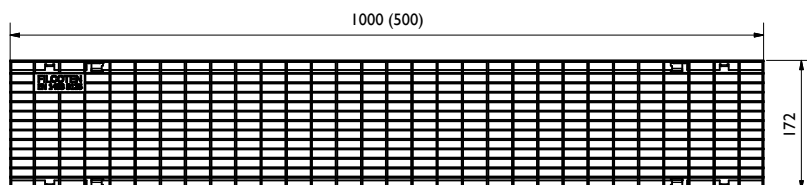


Rinne / channel - Maße / dimensions [mm]								
BG code G	BG code V	BG code E	Typ	Höhe A height A	Höhe B height B	Länge length	Gewicht weight G [kg]	Gewicht weight V/E [kg]
10515102	10515202	10515302	mini 100	100	100	1000	19,8	18,9
10515100	10515200	10515300	mini 120	120	120	1000	21,7	20,2
10515101	10515201	10515301	mini 170	170	170	1000	23,2	22,3

Legende / explanation:	
FCT:	FILCOTEN HPC
V:	verzinkter Stahl / galvanized steel
E:	Edelstahl / stainless steel
G:	Guß Eisen / ductile iron
H:	Holz / wood

Roste, Abdeckungen / grates, covers:

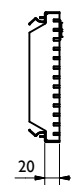
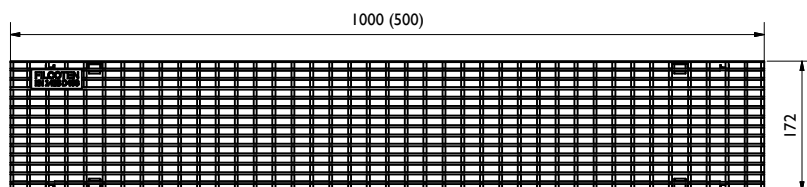
Gitterrost / Mesh grating: MW30/10, C250
BG code: V 17015222 (17015223), E 17015322 (17015323); 6,9 kg (3,6 kg):



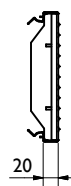
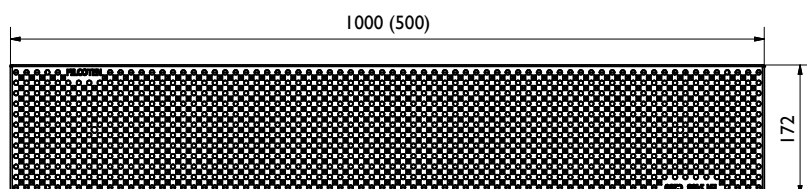
A (1 : 2)



Gitterrost / Mesh grating: MW25/10, D400
BG code: V 17015226 (17015227), E 17015326 (17015327); 10,4 kg (5,3 kg):

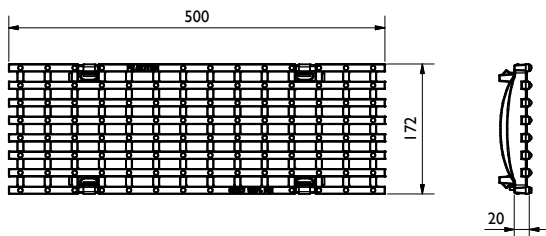


Lochrost / Perforated grating: dm: 6; C250
BG code: V 17015228 (17015229), E 17015328 (17015329); 7 kg (3,5 kg):

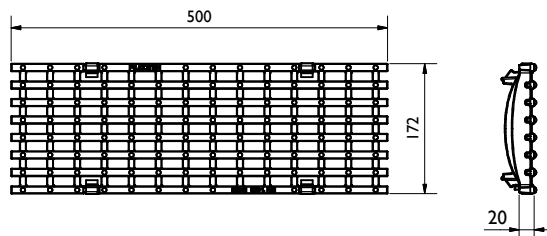


Roste, Abdeckungen / grates, covers:

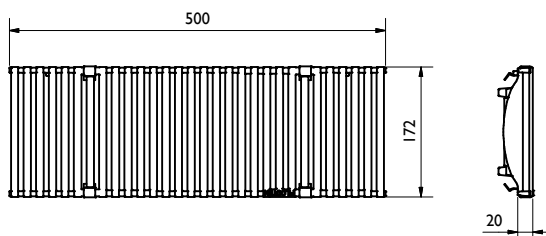
Gußrost / Ductil iron grating: MW29/13, C250
BG code: GJS 17015101; 4,9 kg:



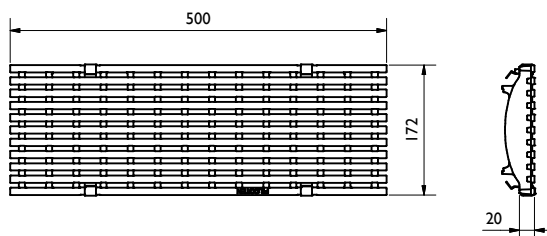
Gußrost / Ductile iron grating: MW29/13, D400
BG code: GJS 17015104; 5,2 kg:



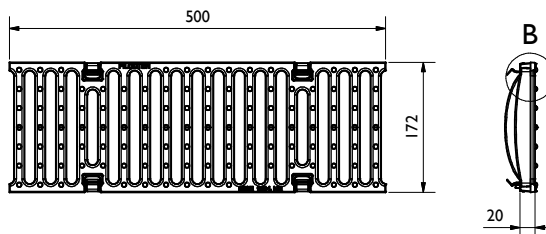
Guß-Designrost / Ductile iron design grating: KIARO, D400
BG code: GJS 17015183; 6 kg:



Guß-Designrost / Ductile iron design grating: VIA, D400
BG code: GJS 17015184; 5,6 kg:

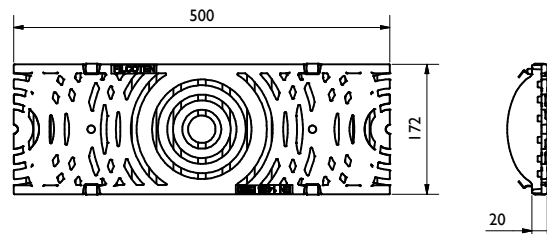


Guß-Stegrost / Ductile iron slotted grating: SW14/150, E600
BG code: GJS 17015105; 7 kg:

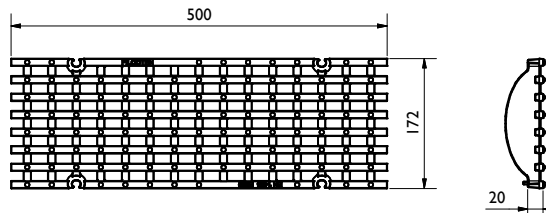


B (1 : 2)

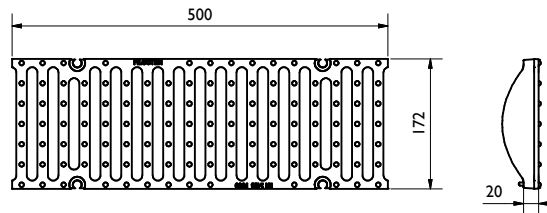
Guß-Designrost / Ductile iron design grating: VILLE, E600
BG code: GJS 17015180; 8,6 kg:



Gußrost / Ductile iron grating: MW22/13, E600
BG code: GJS 17015103; 7,2 kg:
4-fach verschraubbar/4-times bolted

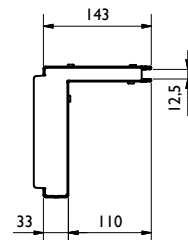
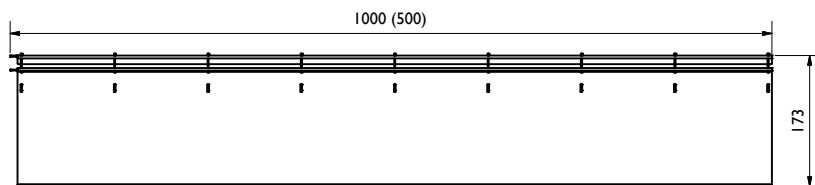


Gußrost / Ductile iron grating: SW14/150, F900
BG code: GJS 17015107; 7,3 kg:
4-fach verschraubbar/4-times bolted

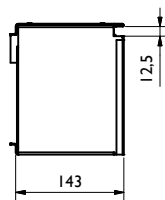
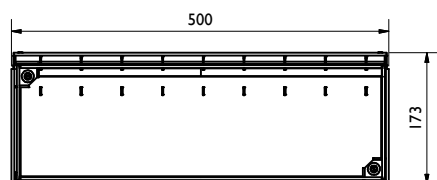


Schlitzaufsatz / slot top NW 150:

Schlitzaufsatz SW 12,5mm, SH 110, C250
BG code: V 17115243 (17115244), E 17115343 (17115344); 6,7 kg (3,3 kg):

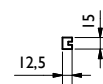
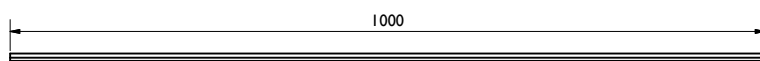


Revisionschacht SW 12,5mm, SH 110, C250
BG code: V 17115281, E 17115381; 5,9 kg:



Zubehör / accessory:

Bauzeitabdeckung / construction time barrier
BG code: H 37962; 0,1 kg:

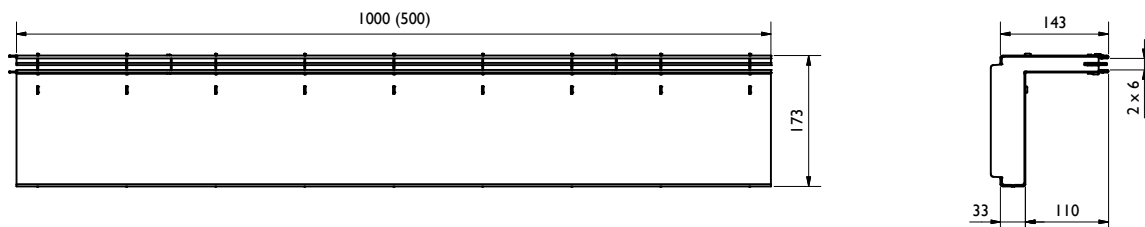


Abhebegriff / opening tool
BG code: V 13399; 0,1 kg:

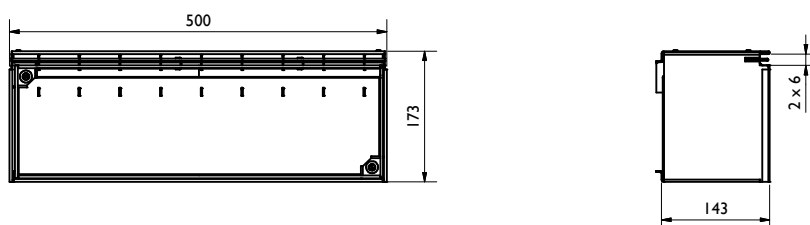


Design-Schlitzaufsatz / decorative-slot top NW 150:

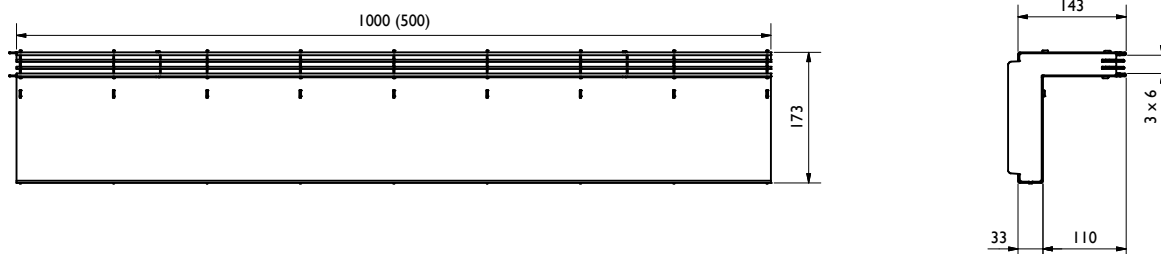
Schlitzaufsatz 2S / slot top 2S, Heelproof, SW 2x6mm, SH 110, C250
BG code: V 17116204 (17116205), E 17116304 (17116305); 7,2 kg (3,6 kg):



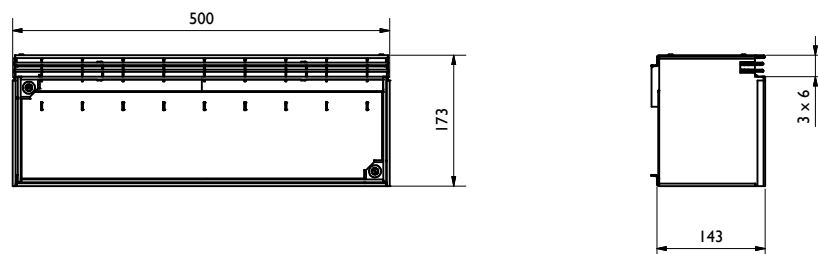
Revisionschacht 2S / revision shaft 2S, Heelproof, SW 2x6mm, SH 110, C250
BG code: V 17116206, E 17116306; 6,8 kg:



Schlitzaufsatz 3S / slot top 3S, Heelproof, SW 3x6mm, SH 110, C250
BG code: E 17116307 (17116308); 7,9 kg (4 kg):



Revisionschacht 3S / revision shaft 3S, Heelproof, SW 3x6mm, SH 110, C250
BG code: E 17116309; 6,8 kg:

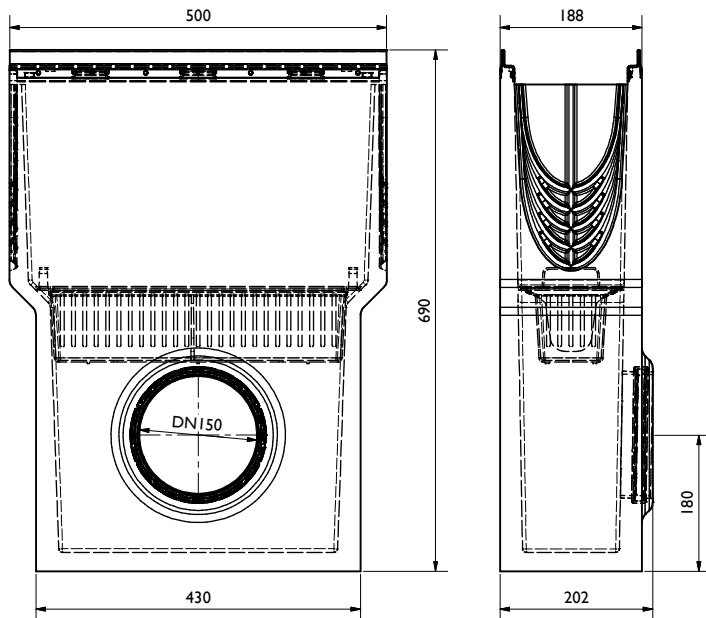


Abdeckband weiß / cover tape white
BG code: 37963

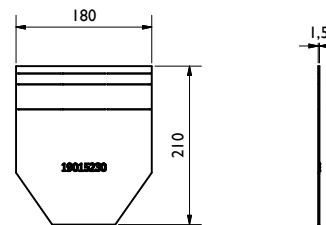
50mm Breite / width
33m Länge pro Rolle / length per roll

Zubehör / accessories:

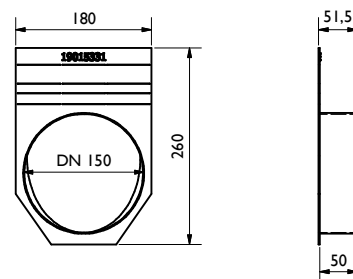
Sinkkasten / Sump unit:
inkl. Schlammemeier / incl. silt bucket (22516; 0,3 kg)
BG code: V 10615292, E 10615392; 44,8 kg:



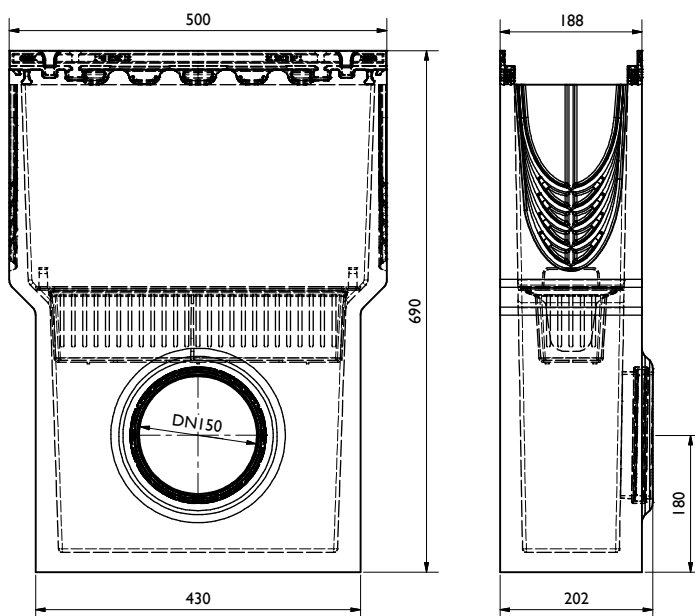
Stirn-/ Endplatte / End cap:
BG code: V 19015230, E 19015330; 0,5 kg:



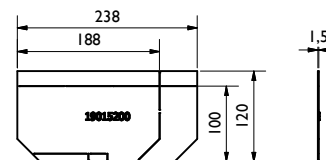
Stirn-/ Endplatte / End cap:
BG code: V 19015231, E 19015331; 0,6 kg:



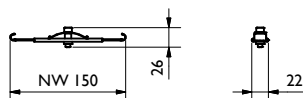
Sinkkasten / Sump unit:
inkl. Schlammemeier / incl. silt bucket (22516; 0,3 kg)
BG code: G 10615192; 45,3 kg:



Stirn-/ Endplatte / End cap:
BG code: V 19015200, E 19015300; 0,3 kg:



Vandalismus Verriegelung / Anti-vandalism locking device
BG code: E 32088; 0,1 kg:



Verschraubungsmaterial / Bolting material:
BG code: V 32103; BG code: E 32109:

