

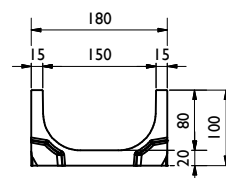
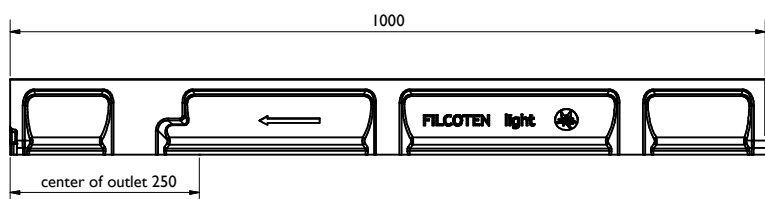
BG-FILCOTEN light mini NW150



GRASPOINTNER
Sustainable innovation.

Rinne / channel:

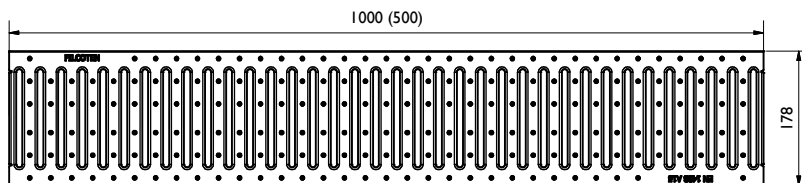
FILCOTEN light: NW150, C250
BG code: 10315000 (10315050); 20,6 kg (10,3 kg):



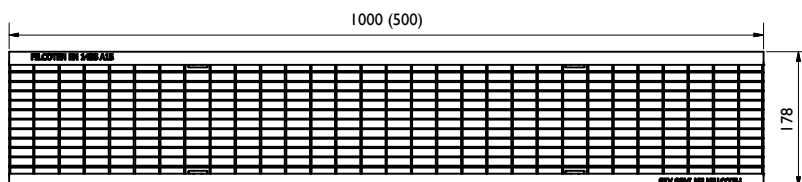
Legende / explanation:	
FCT:	FILCOTEN HPC
V:	verzinkter Stahl / galvanized steel
E:	Edelstahl / stainless steel
G:	Gußeisen / ductile iron
H:	Holz / wood

Roste, Abdeckungen / grates, covers:

Stegrost / Slotted grating: SW 8/130, A15
BG code: V 17015200 (17015201); 2,9 kg (1,5 kg):



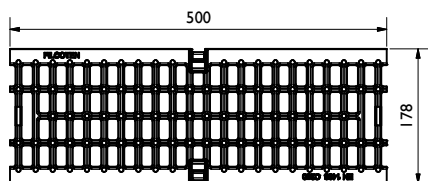
Gitterrost / Mesh grating: MW 30/10, B125
BG code: V 17015210 (17015211); 4,6 kg (2,3 kg):



B (1 : 2)



Gussrost / Ductile iron grating: MW 15/28, C250
BG code: GJS 17015100; 4,6 kg:



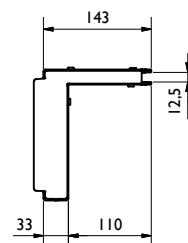
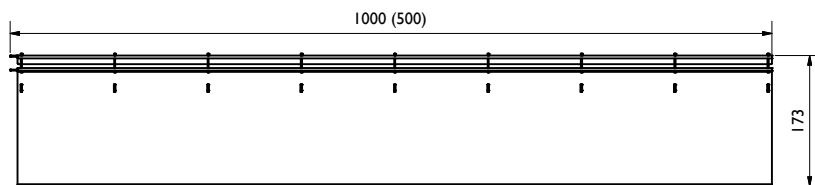
A (1 : 2)



Schlitzaufsatz / slot top NW 150:

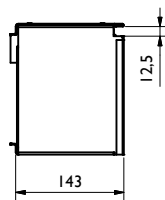
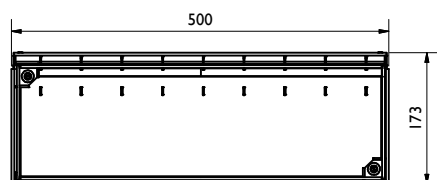
Schlitzaufsatz SW 12,5mm, SH 110, C250

BG code: V 17115243 (17115244), E 17115343 (17115344); 6,7 kg (3,3 kg):



Revisionschacht SW 12,5mm, SH 110, C250

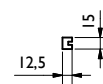
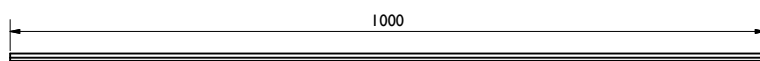
BG code: V 17115281, E 17115381; 5,9 kg:



Zubehör / accessory:

Bauzeitabdeckung / construction time barrier

BG code: H 37962; 0,1 kg:



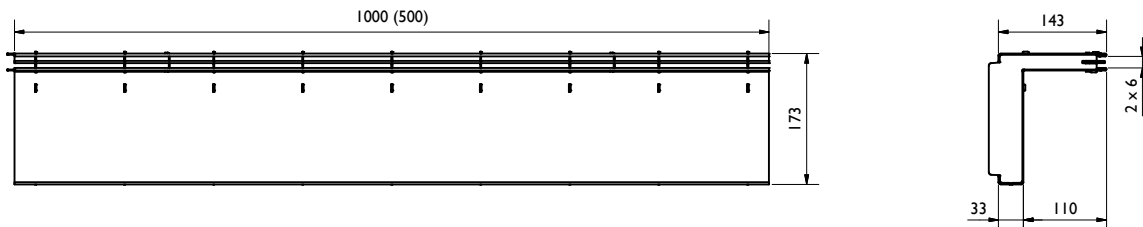
Abhebegriff / opening tool

BG code: V 13399; 0,1 kg:

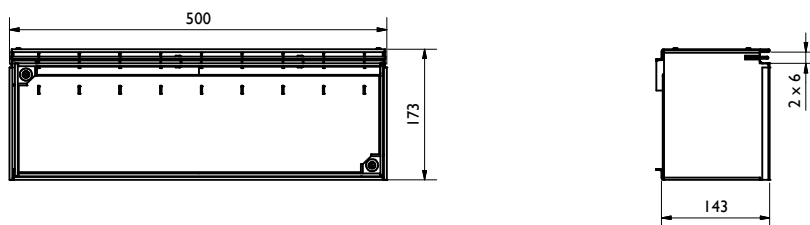


Design-Schlitzaufsatz / decorative-slot top NW 150:

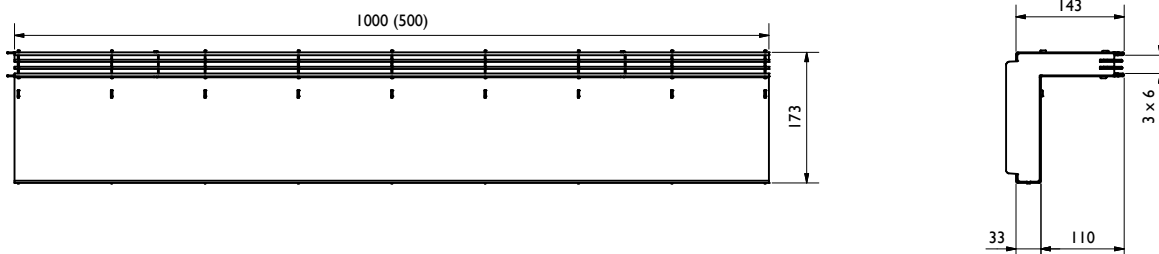
Schlitzaufsatz 2S / slot top 2S, Heelproof, SW 2x6mm, SH 110, C250
BG code: V 17116204 (17116205), E 17116304 (17116305); 7,2 kg (3,6 kg):



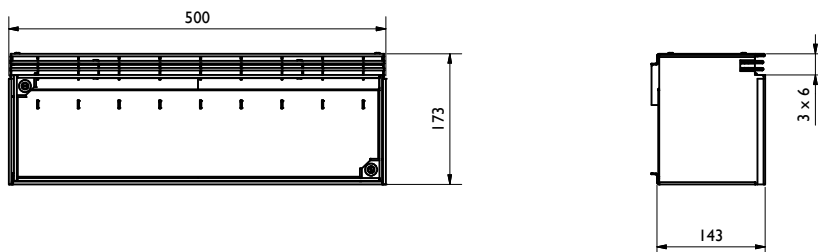
Revisionschacht 2S / revision shaft 2S, Heelproof, SW 2x6mm, SH 110, C250
BG code: V 17116206, E 17116306; 6,8 kg:



Schlitzaufsatz 3S / slot top 3S, Heelproof, SW 3x6mm, SH 110, C250
BG code: E 17116307 (17116308); 7,9 kg (4 kg):



Revisionschacht 3S / revision shaft 3S, Heelproof, SW 3x6mm, SH 110, C250
BG code: E 17116309; 6,8 kg:



Abdeckband weiß / cover tape white
BG code: 37963

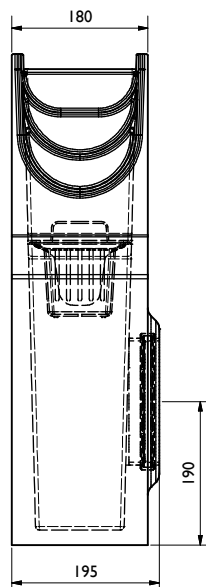
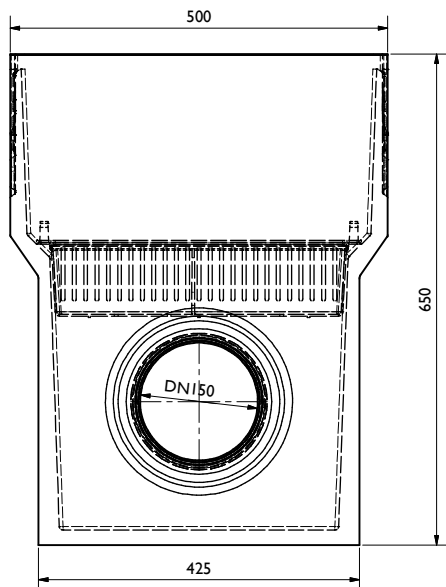
50mm Breite / width
33m Länge pro Rolle / length per roll

BG-FILCOTEN light mini NW150

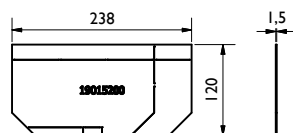


GRASPOINTNER
Sustainable innovation.

Sinkkasten / Sump unit:
inkl. Schlammemeier / incl. silt bucket (22516; 0,3 kg)
BG code: FCT 10315092; 45,3 kg:



Endplatte / end cap:
BG code: V 19015200, E 19015300; 0,3 kg



Patentklammer für Gitterrost /
locking clip for mesh grate
BG code: 32080; 0,1 kg:



Patentklammer für Guss-Maschenrost /
locking clip for ductile iron mesh grate
BG code: 32067; 0,1 kg:



Halteklammer für Guss-Maschenrost /
fixing clip for ductile iron mesh grate
BG code: 32068; 0,1 kg:

